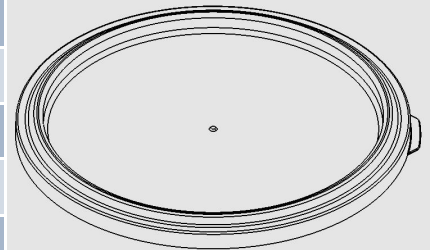


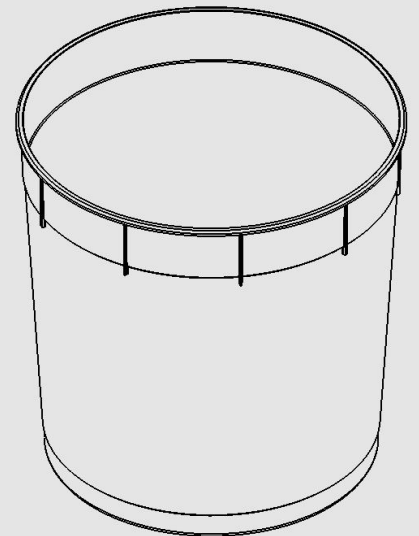
Cover Specification

Origin of Materials	100% US Manufactured
Material	Linear low-density polyethylene (LLDPE)
Weight	.14 lbs / 65g
Height	3/4"
Min Wall Thickness	0.035"
Outside Diameter	9 7/8"
Gasket	No Gasket Available
Standard Color	<i>Natural</i>
Case Quantity	3,200 per pallet
Print Area	Details available from customer service



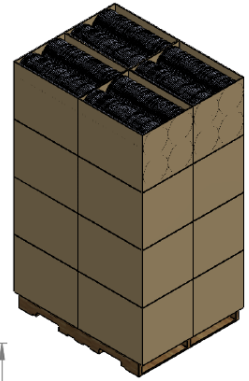
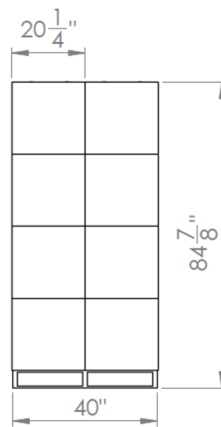
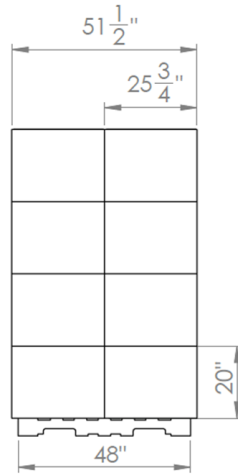
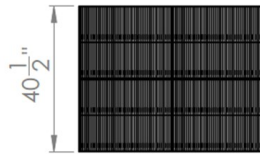
Pail Specification

Origin of Materials	100% US Manufactured
Material	High Density Polyethylene (HDPE)
Handles	N/A
Weight	.57 lbs. / 260g
Exterior Height	9 5/8" / With Cover 10 1/8 "
Min. Wall Thickness	0.045"
Outside Diameter - Top	9 3/4"
Outside Diameter - Bottom	8 3/8"
Standard Color	Natural
Case Quantity	400 Units per Pallet
Print Area	7 3/8" x 9 1/8"
Top Load Rating	N/A



Pack Specifications For Cover

- 3,200 Units
- 4 Stacks x 50 high per box
- 4 Boxes per layer x 4 high
- Lid material is LLDPE
- Optional bagging of individual stacks for food grade products.



Pack Specifications For Pail

- 400 Units
- 20 Stacks x 20 High
- Pail Material is HDPE
- Optional bagging of individual stacks for food grade products.

