
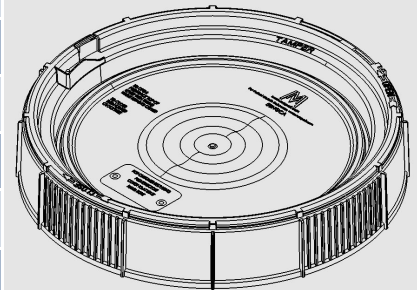


UN Certification:  1H2/Y30/S & 1H2/X11.5/S

## Cover Specification - Slotted

Origin of Materials	100% US Manufactured
Material	High Density Polyethylene (HDPE)
Weight	1.03 lbs. / 470 g
Height	2 1/2"
Min Wall Thickness	0.090"
Bottom Outside Diameter	12 3/4"
Gasket	Neoprene/ Available w/o Gasket
Fitments	<i>Please inquire about custom fittings</i>
Standard Color	White <i>Please inquire about custom colors</i>
Shipping Quantity	20 per case / 240 per pallet



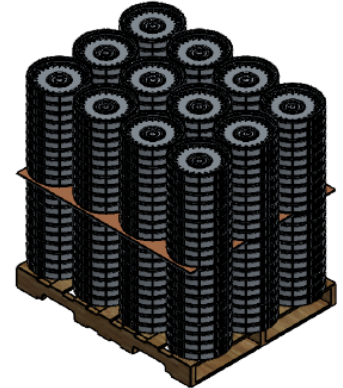
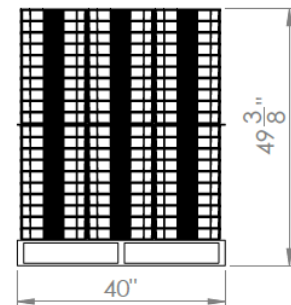
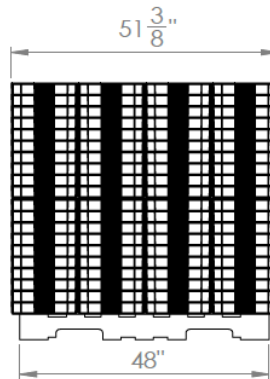
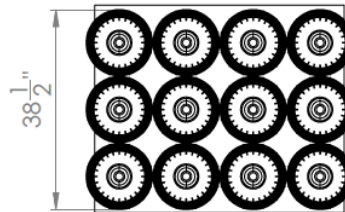
## Pail Specification

Origin of Materials	100% US Manufactured
Material	High Density Polyethylene (HDPE)
Handles	Plastic
Weight	2.36 lbs. / 1071 g
Exterior Height	15 1/4" With Cover 16"
Min. Wall Thickness	0.090"
Inside Diameter - Top	11 1/4"
Outside Diameter - Bottom	10 1/4"
Standard Color	White <i>Please inquire about custom colors</i>
Shipping Quantity	120 Units per Pallet 4,320 Units per Truckload
Print Area	9 1/2" x 33"
Heat Transfer Area	8 1/2" x 31"
Top Load Rating	425 lbs.



**Pack Specifications For Cover**

- 240 Units
- 12 stacks x 10 high per box
- 2 layers per pallet
- Lid material is HDPE



**Pack Specifications For Pail**

- 120 Units
- 12 Stacks x 10 High
- Pail Material is HDPE

